

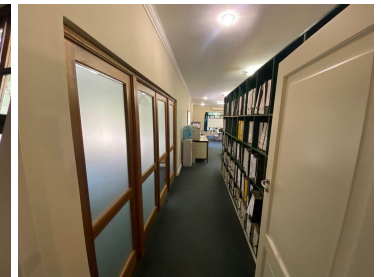
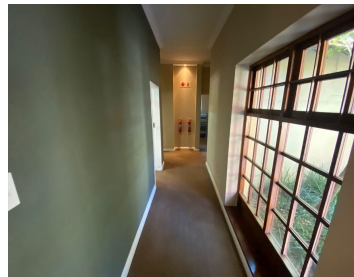
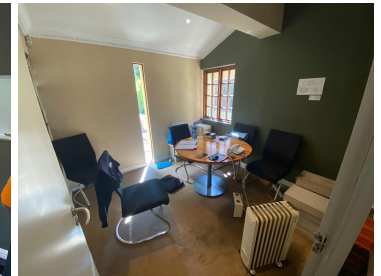
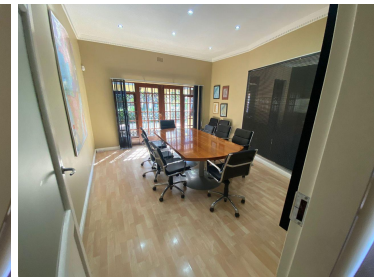
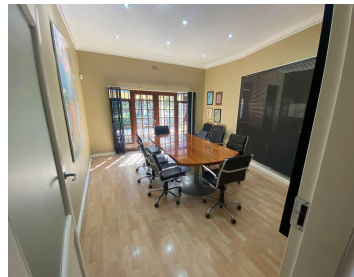
# R13,000,000

Prime commercial building for sale in Melrose Estate

 **420 m<sup>2</sup>**

This is a fantastically located office space is for sale in the Melrose Estate business node. The property is ideally situated on a main road, allowing for great exposure. The M1 is close by, creating quick and easy navigation to the building.

This is a beautiful space with high end finishing's and fittings. Excellent natural light throughout the buildings. Space is multi leveled with kitchens and ablutions on each level. Standard air-conditioning installed.



**Sale Price** R13,000,000 Ex Vat  
**Lease Period** -  
**Available From** -

<b>Floor Size m<sup>2</sup></b>	420	<b>Security</b>	Yes
<b>Parking Bays</b>	-	<b>Air Conditioning</b>	Yes
<b>Title</b>	-	<b>Generator</b>	-
<b>Zoning</b>	Commercial	<b>Fibre</b>	-

## CONTACT US

Call the Officeplace Broker  
**Ash Warwick**  
**Cell** No. 0769309520  
**Email** ash@officeplace.co.za

Call the Officeplace Branch  
**Johannesburg**  
**Office** No. (011) 2341144  
**Email** contact@officeplace.co.za

 <https://www.facebook.com/officeplace/>