

R3,500,000

Perfectly located commercial building available for sale in Kempton Park

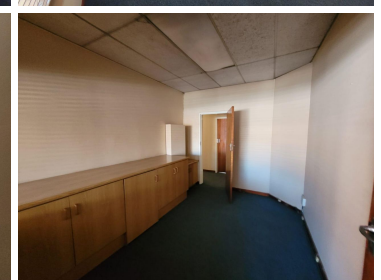
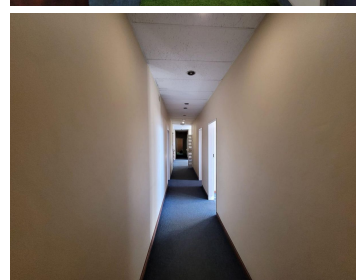
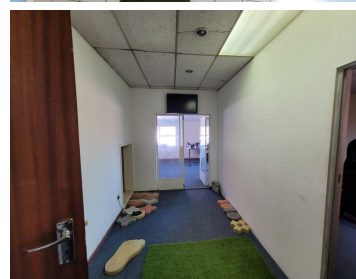
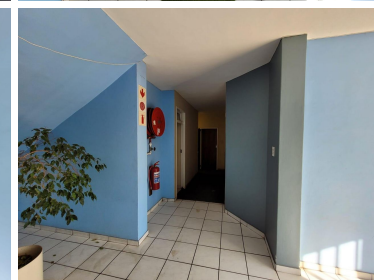
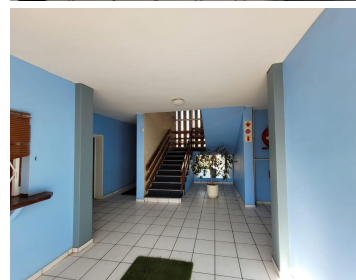
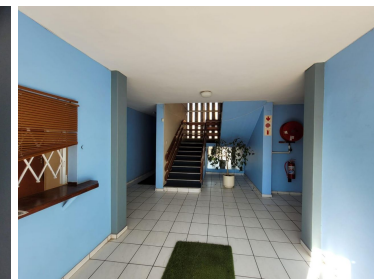
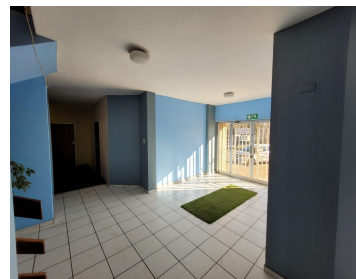
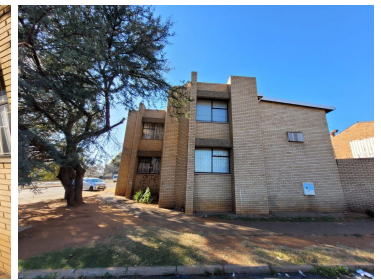
 **800 m²**

A freestanding property available for SALE in the Rhodesfield area of Kempton Park.

This property consists of 800sqm underroof consisting of a walk in reception area, offices and workshop space with a roller shutter door, which can be converted into extra office space as well. Wet kitchen with staff ablutions.

There is ample parking available for use, which is in a secure yard on the property. A great business address for any company.

The building is ideally located and within close proximity to the R21 highway, allowing for quick and easy accessibility and is only minutes away from the O.R Tambo International Airport.



Sale Price R3,500,000 Ex Vat
Lease Period -
Available From -

Floor Size m²	800	Security	Yes
Parking Bays	-	Air Conditioning	Yes
Title	-	Generator	-
Zoning	Commercial	Fibre	-

CONTACT US

Call the Officeplace Broker

Jarryd Baard

Cell No. 0664356181

Email jarryd@officeplace.co.za

Call the Officeplace Branch

Johannesburg

Office No. (011) 2341144

Email contact@officeplace.co.za

 <https://www.facebook.com/officeplace/>