

17,500 pm

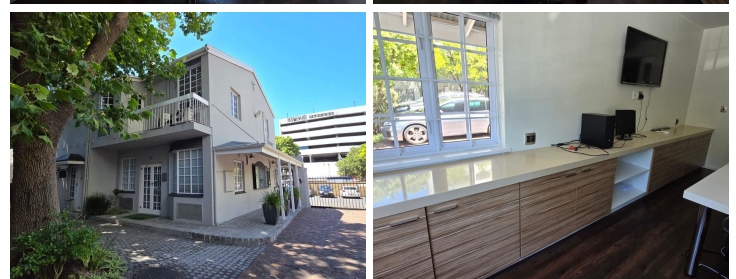
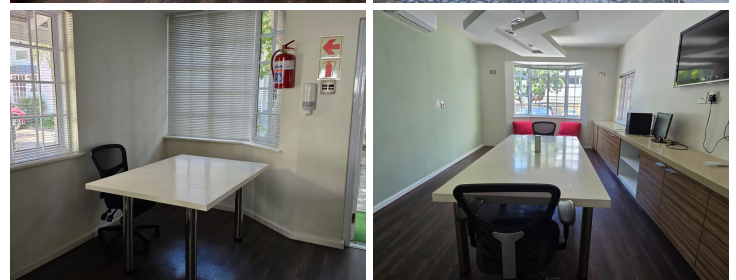
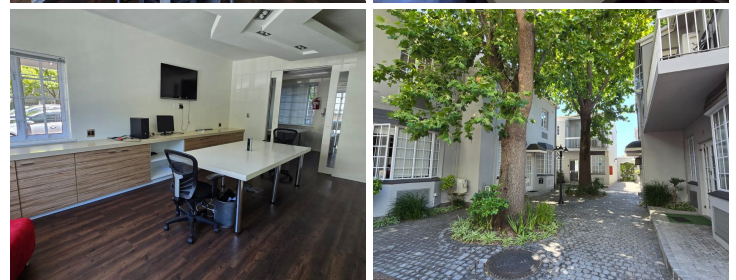
DRAPER SQUARE | MODERN GROUND FLOOR OFFICE
AVAILABLE TO LET IN CLAREMONT | 86SQM

 **86 m²**

This modern ground-floor office is available to rent in a secure and well-maintained office park in Claremont.

The space boasts beautiful laminated flooring throughout, Caesarstone counters, and stylish finishes. It comes partly furnished and is ready for immediate occupation. Currently configured to allow for a private enclosed office, spacious boardroom, open plan work area and kitchenette.

Designated parking available.



Gross Monthly Rental R17,500 Ex Vat
Lease Period Negotiable
Available From Immediately

Floor Size m²	86	Security	-
Parking Bays	-	Air Conditioning	Yes
Title	-	Generator	-
Zoning	Commercial	Fibre	-

CONTACT US

Call the Officeplace Broker
Jennifer Pentene
Cell No. 0664757042
Email jennifer@officeplace.co.za

Call the Officeplace Branch
Cape Town
Office No. (021) 9112906
Email infoct@apiproperty.co.za

 <https://www.facebook.com/officeplace/>