

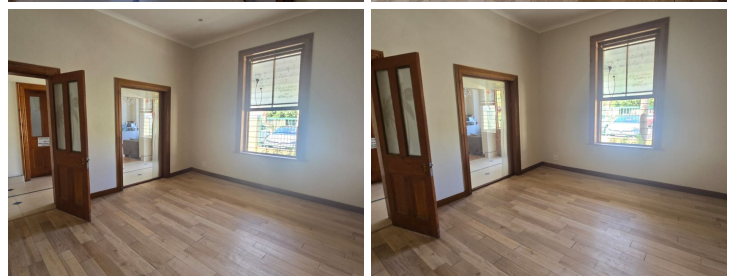
# 7,500 pm

FRANKLIN ROAD | OFFICE SPACE TO RENT | CLAREMONT | 30m<sup>2</sup>

 30 m<sup>2</sup>

A private suite is now available in a well-regarded wellness centre in Claremont, offering an excellent space for a therapist or consultant. This space has beautiful wooden flooring throughout, a large sliding sash window and is newly renovated.

The centre includes a shared reception area, a comfortable waiting space, and bathroom facilities, creating a welcoming and convenient environment for both practitioners and visitors.



**Gross Monthly Rental** R7,500 Ex Vat  
**Lease Period** Negotiable  
**Available From** Immediately

<b>Floor Size m<sup>2</sup></b>	30	<b>Security</b>	-
<b>Parking Bays</b>	-	<b>Air Conditioning</b>	-
<b>Title</b>	-	<b>Generator</b>	-
<b>Zoning</b>	Commercial	<b>Fibre</b>	-

## CONTACT US

Call the Officeplace Broker  
**Jennifer Pentene**  
 Cell No. 0664757042  
 Email [jennifer@officeplace.co.za](mailto:jennifer@officeplace.co.za)

Call the Officeplace Branch  
**Cape Town**  
 Office No. (021) 9112906  
 Email [infoct@apiproperty.co.za](mailto:infoct@apiproperty.co.za)

 <https://www.facebook.com/officeplace/>