

8,379 pm

42SQM OFFICE UNIT TO LET, DIE HOEWES

42 m²

Centurion is a prime business hub offering variety of sectors within the area. This A-Grade office space is situated on the first floor of the multi-tenanted Corporate 66 Office Park based on Von Willich Avenue in Centurion. This modern office unit comprises out of 2 closed office areas. Tenants will have access to several communal areas such as a reception area along with a waiting area, communal boardrooms, small meeting rooms, a kitchen area and ablutions. The office is available to let semi furnished with multiple office desks and chairs within the respective office areas. The offices feature air conditioning, neat carpet flooring, glass panel partitioning and windows with blinds that allow for ample natural light. The entire office building showcases modern up-market finishes offering the ideal corporate environment for any business.

Corporate 66 Office Park has twenty-four-hour security along with access-controlled entrance and exit points. Tenants will have access to open parking bays along with allocated basement parking bays available at an additional cost. Centurion is home to a range of amenities and commodities...

Gross Monthly Rental R8,379 Ex Vat
Lease Period Negotiable
Available From Negotiable

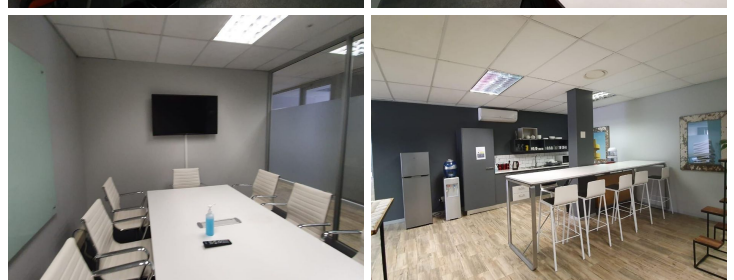
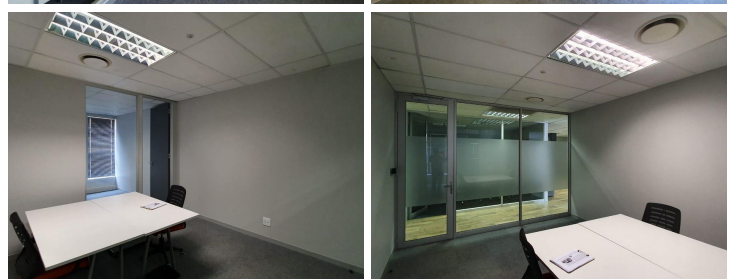
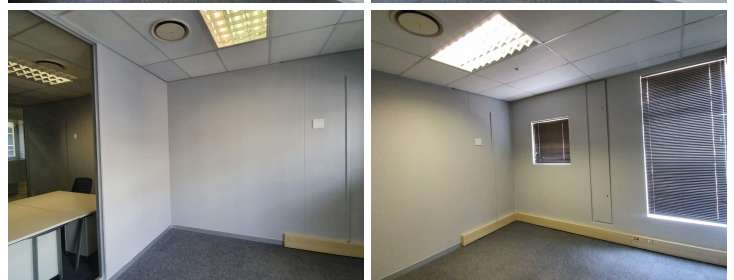
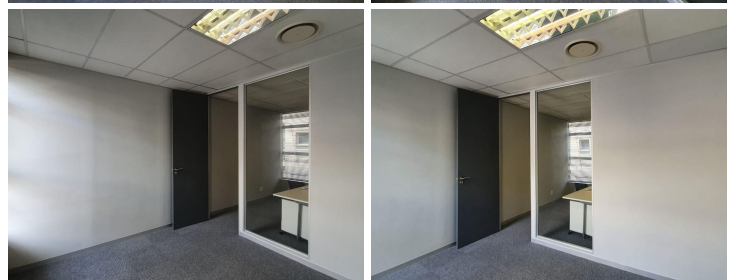
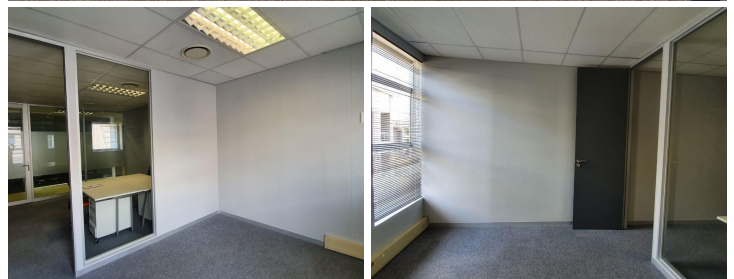
Floor Size m²	42	Security	Yes
Parking Bays	-	Air Conditioning	Yes
Title	Sectional Title	Generator	-
Zoning	Commercial	Fibre	Gross rental includes: -

CONTACT US

Call the Officeplace Broker
Andre Groenewald
Cell No. 064 890 6480
Email andre@officeplace.co.za

Call the Officeplace Branch
Pretoria
Office No. (012) 6440522
Email infopta@apiproperty.co.za

<https://www.facebook.com/officeplace/>



Cleaning service -
 Rates -
 Taxes Gross rental excludes: -
 Parking -
 VAT - Semi-Serviced -
 A-Grade -
 Multi-tenanted -
 Reception -
 2 Closed offices -
 Boardrooms -
 Kitchen -
 Ablutions -
 Secure -
 Guard