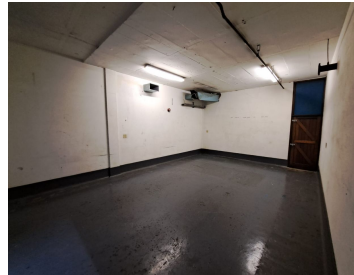
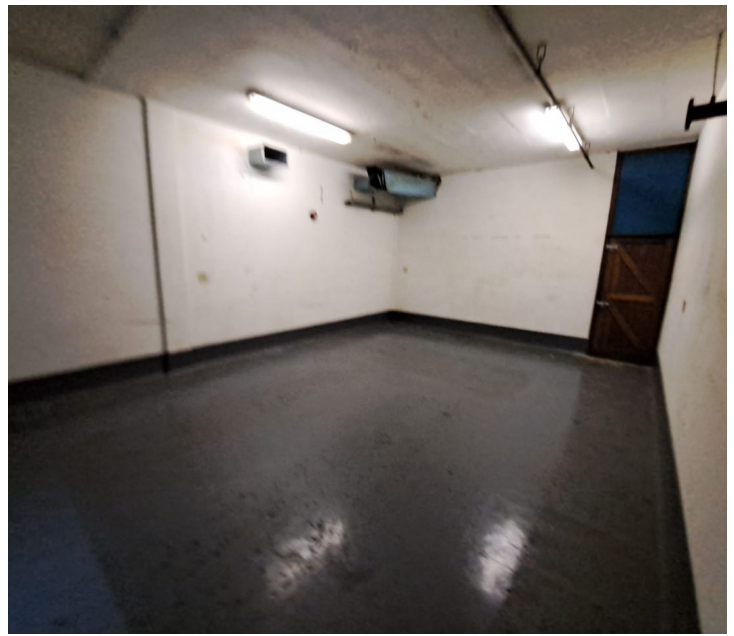


# 3,770 pm

Spacious 58m<sup>2</sup> storage space in Westville

 58 m<sup>2</sup>

Discover a secure and conveniently located basement store room in the heart of Westville. This private storage space is safely tucked away in a secure basement, accessible only via a garage entrance, ensuring maximum security and peace of mind. With easy access to local amenities and transportation links, this storage solution is perfect for residents and businesses seeking a reliable and secure space to store valuable items.



**Gross Monthly Rental** R3,770 Ex Vat  
**Lease Period** Negotiable  
**Available From** Immediately

<b>Floor Size m<sup>2</sup></b>	58	<b>Security</b>	-
<b>Parking Bays</b>	-	<b>Air Conditioning</b>	-
<b>Title</b>	-	<b>Generator</b>	-
<b>Zoning</b>	Commercial	<b>Fibre</b>	-

## CONTACT US

Call the Officeplace Broker

**Leon Rass**

**Cell** No. 071 499 1152

**Email** [leon@apiproperty.co.za](mailto:leon@apiproperty.co.za)

Call the Officeplace Branch

**Johannesburg**

**Office** No. (011) 2341144

**Email** [contact@officeplace.co.za](mailto:contact@officeplace.co.za)

 <https://www.facebook.com/officeplace/>