

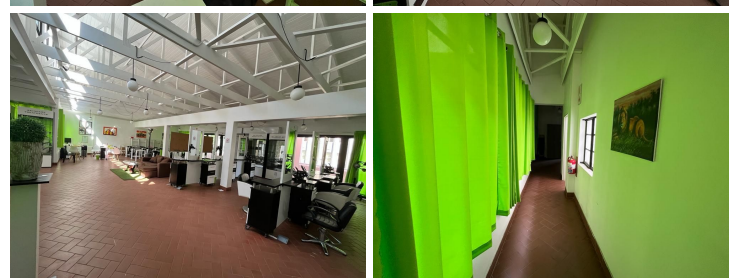
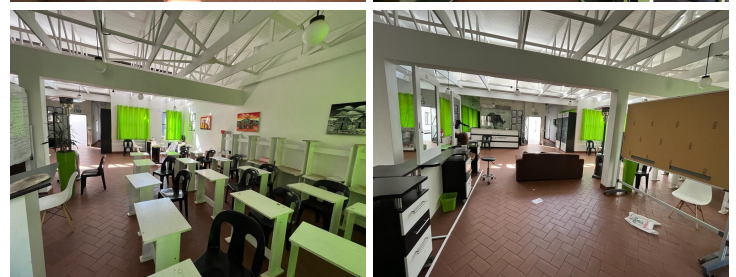
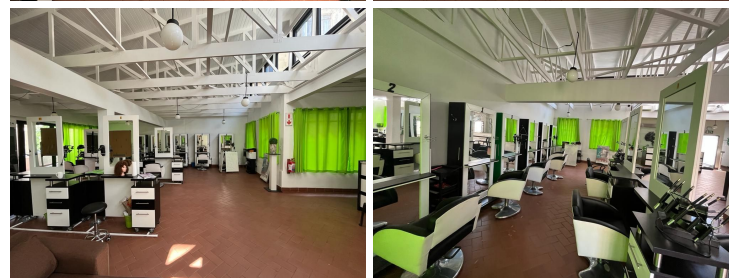
30,000 pm

Retail/Commercial space available for rental in Braamfontein

 **260 m²**

This is a fantastically located street facing commercial building in the heart of the Braamfontein business node. The property is easily accessible from the M1 highway, with various public transportation facilities close by. There are also various retail amenities in the vicinity.

This is a secure ground floor space available for lease. The space would be very well-suited for a gallery space or retail premises. There is a large display window at the entrance, with good natural light flowing throughout.



Gross Monthly Rental R30,000 Ex Vat
Lease Period Negotiable
Available From Immediately

Floor Size m²	260	Security	Yes
Parking Bays	-	Air Conditioning	Yes
Title	-	Generator	-
Zoning	Commercial	Fibre	-

CONTACT US

Call the Officeplace Broker
Velile Moroe
Cell No. 066 477 9947
Email velile@officeplace.co.za

Call the Officeplace Branch
Johannesburg
Office No. (011) 2341144
Email contact@officeplace.co.za

 <https://www.facebook.com/officeplace/>