

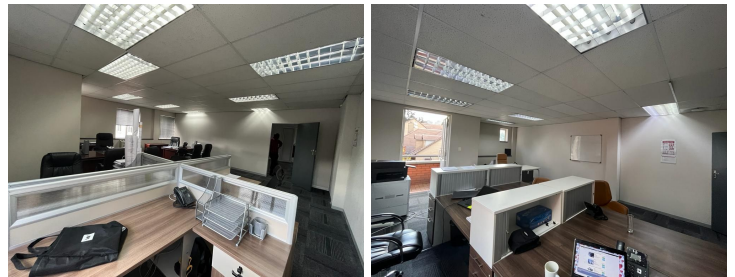
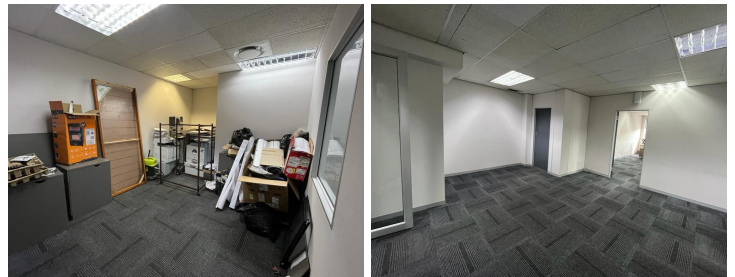
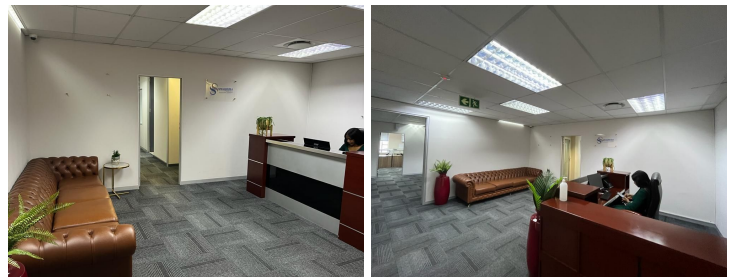
# 25,000 pm

Shared office space available for rental in Houghton

 **230 m<sup>2</sup>**

This is a 230sqm shared office with a completely separate space from the current tenant available for rental. Inclusive of shared reception and receptionist as well as electricity and water.

The suburb offers the benefits of easy highway access, being positioned adjacent to the leafy suburbs and located outside of the heavily trafficked commercial nodes of Rosebank and Sandton.



**Gross Monthly Rental** R25,000 Ex Vat  
**Lease Period** Negotiable  
**Available From** Immediately

<b>Floor Size m<sup>2</sup></b>	230	<b>Security</b>	Yes
<b>Parking Bays</b>	-	<b>Air Conditioning</b>	Yes
<b>Title</b>	-	<b>Generator</b>	-
<b>Zoning</b>	Commercial	<b>Fibre</b>	-

## CONTACT US

Call the Officeplace Broker  
**Velile Moroe**  
**Cell** No. 066 477 9947  
**Email** [velile@officeplace.co.za](mailto:velile@officeplace.co.za)

Call the Officeplace Branch  
**Johannesburg**  
**Office** No. (011) 2341144  
**Email** [contact@officeplace.co.za](mailto:contact@officeplace.co.za)

 <https://www.facebook.com/officeplace/>