

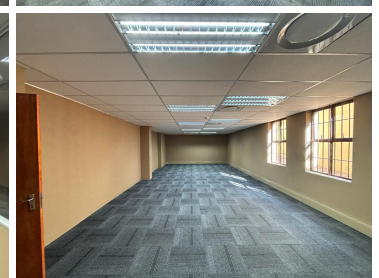
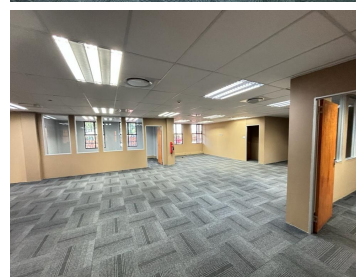
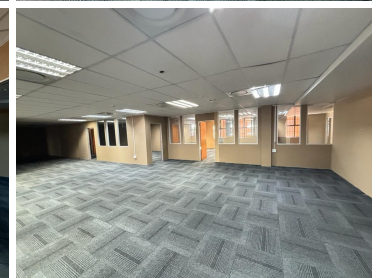
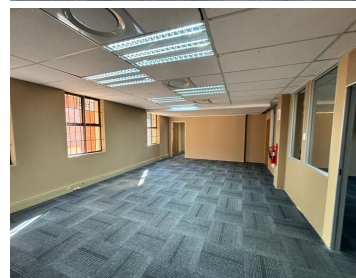
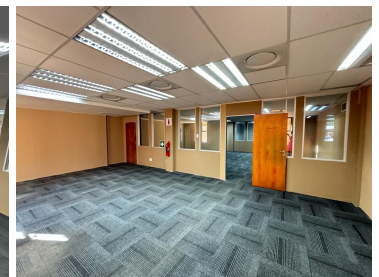
# 60,000 pm

23 West Street | Prime Office Space to Let in Houghton Estate

 **600 m<sup>2</sup>**

23 West Street in Houghton offers an A grade commercial space in a well-established location. Rental is R100 per sqm excluding VAT and utilities. There is ample, secure parking available. The unit is highly secure with modern, upmarket finishes and the space boasts brilliant natural lighting throughout. The building is equipped with backup power and there is a strong-room available.

The building is in close proximity to the M1 highway and the Killarney Mall.



**Gross Monthly Rental** R60,000 Ex Vat  
**Lease Period** 12 months  
**Available From** Immediately

<b>Floor Size m<sup>2</sup></b>	600	<b>Security</b>	Yes
<b>Parking Bays</b>	-	<b>Air Conditioning</b>	Yes
<b>Title</b>	-	<b>Generator</b>	-
<b>Zoning</b>	Commercial	<b>Fibre</b>	-

## CONTACT US

Call the Officeplace Broker  
**Casey David**  
 Cell No. +27664749057  
 Email [casey@officeplace.co.za](mailto:casey@officeplace.co.za)

Call the Officeplace Branch  
**Johannesburg**  
 Office No. (011) 2341144  
 Email [contact@officeplace.co.za](mailto:contact@officeplace.co.za)

 <https://www.facebook.com/officeplace/>