

173,577 pm

Commercial office space available for rental in JHB CBD

 **2303 m²**

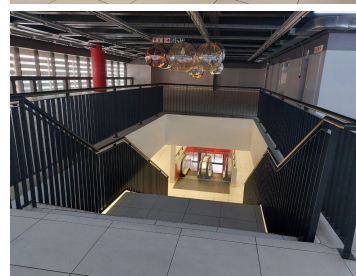
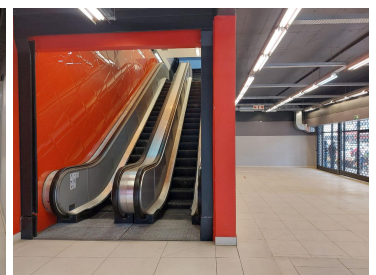
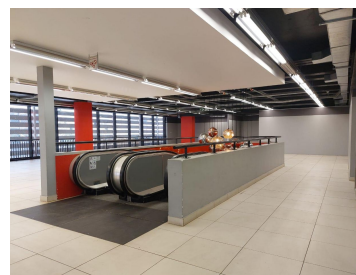
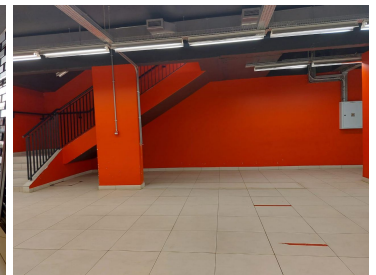
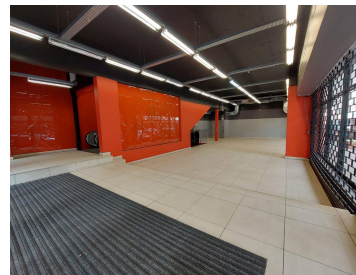
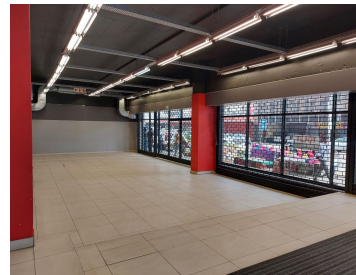
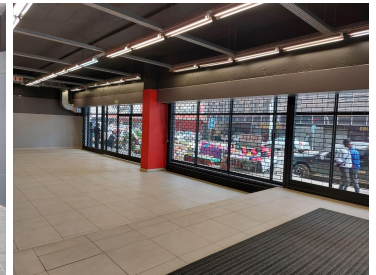
This very neat corner unit is available to let immediately.

The unit is made up of the Basement, Ground, First and Second floors.

The unit boasts escalators, a passenger lift and a flight of stairs to reach the upper levels.

It is conveniently situated in a busy area.

Public transport facilities nearby.



Gross Monthly Rental R173,577 Ex Vat
Lease Period Negotiable
Available From Immediately

Floor Size m²	2303	Security	Yes
Parking Bays	-	Air Conditioning	Yes
Title	-	Generator	-
Zoning	Commercial	Fibre	-

CONTACT US

Call the Officeplace Broker
Khumo Molefe
Cell No. 0660190546
Email khumo@apiproperty.co.za

Call the Officeplace Branch
Johannesburg
Office No. (011) 2341144
Email contact@officeplace.co.za

 <https://www.facebook.com/officeplace/>