

3,200 pm

Office space available for lease in the heart of Johannesburg

 **64 m²**

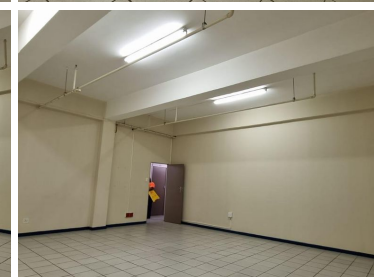
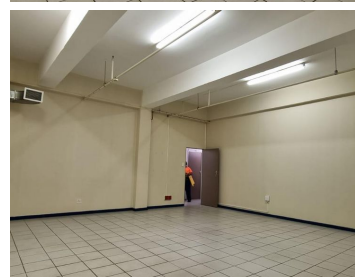
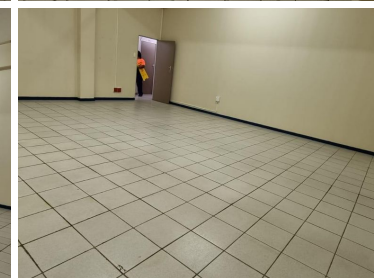
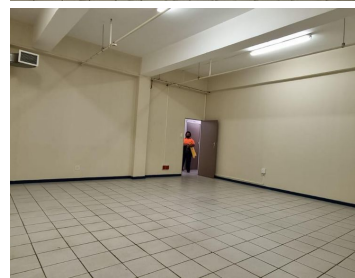
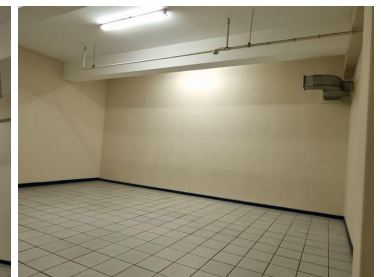
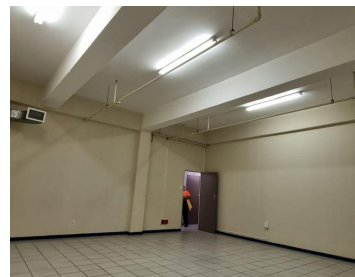
This office space is available to let immediately.

It is situated on the 2nd floor of this neat and well-maintained mixed-use building.

The spacious open plan office is tiled throughout.

The building is conveniently situated along the Reavaya bus route.

Public transport facilities nearby.



Gross Monthly Rental R3,200 Ex Vat
Lease Period Negotiable
Available From Immediately

Floor Size m²	64	Security	Yes
Parking Bays	-	Air Conditioning	Yes
Title	-	Generator	-
Zoning	Commercial	Fibre	-

CONTACT US

Call the Officeplace Broker
Khumo Molefe
Cell No. 0660190546
Email khumo@apiproperty.co.za

Call the Officeplace Branch
Johannesburg
Office No. (011) 2341144
Email contact@officeplace.co.za

 <https://www.facebook.com/officeplace/>