

3,120 pm

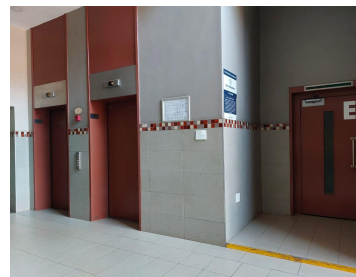
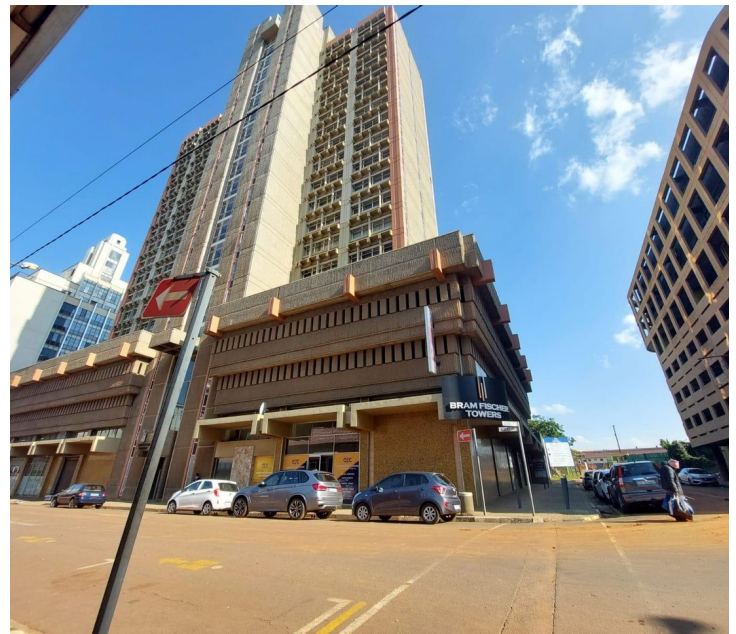
Prime commercial office space available for rental in Marshalltown

 39 m²

This open plan office space is situated on the 14th floor of the neat and well-maintained Bram Fischer building. The office space is available to let immediately.

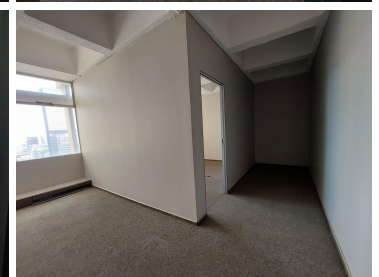
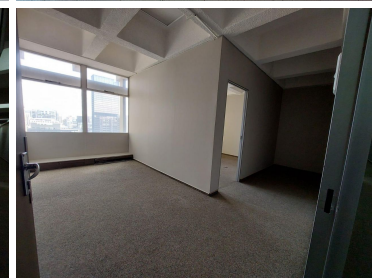
The office is carpeted throughout. The office space is made up of a Reception and a separate office. There is a communal kitchen on the floor. Communal ablution facilities available on each floor.

Public transport facilities nearby. Connect easily to the M1 and M2 highway network system.



Gross Monthly Rental R3,120 Ex Vat
Lease Period Negotiable
Available From Immediately

Floor Size m²	39	Security	Yes
Parking Bays	-	Air Conditioning	Yes
Title	-	Generator	-
Zoning	Commercial	Fibre	-



CONTACT US

Call the Officeplace Broker

Khumo Molefe

Cell No. 0660190546

Email khumo@apiproperty.co.za

Call the Officeplace Branch

Johannesburg

Office No. (011) 2341144

Email contact@officeplace.co.za

 <https://www.facebook.com/officeplace/>