

3,680 pm

Well located commercial office available for rental in Marshalltown

 **46 m²**

This office space is available to let immediately.

The space is situated on the 12th floor of the neat and well-maintained Bram Fischer Towers building.

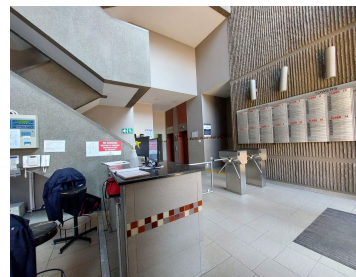
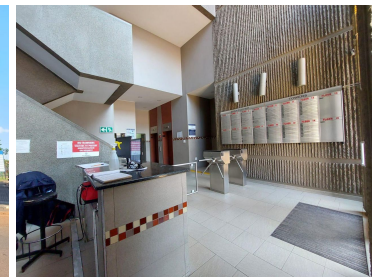
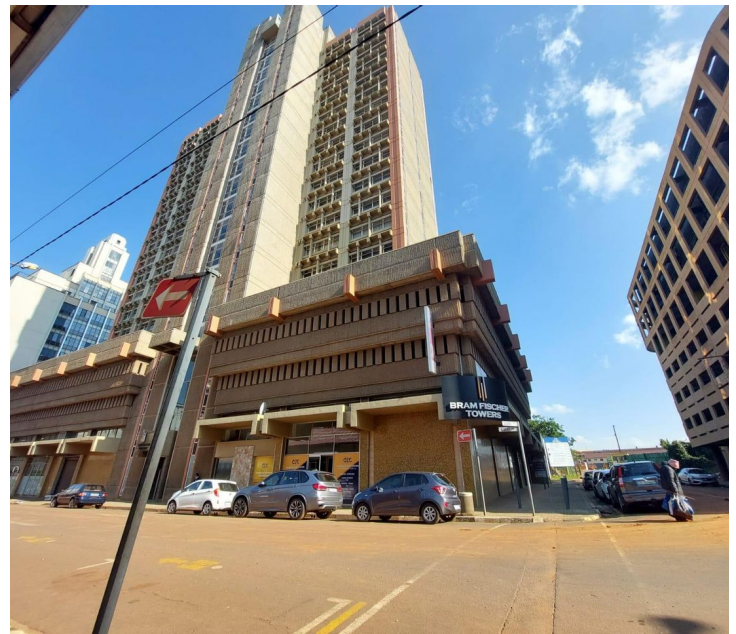
The office is open plan and carpeted throughout.

Communal kitchen and ablutions are available on the floor.

Basement parking available in the building.

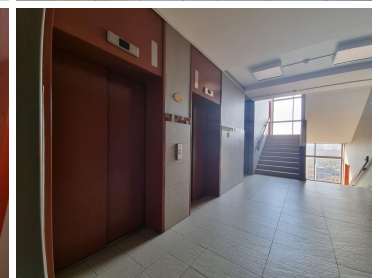
Public transport facilities nearby.

Connect easily to the M1/M2 highway network system.



Gross Monthly Rental R3,680 Ex Vat
Lease Period Negotiable
Available From Immediately

Floor Size m²	46	Security	Yes
Parking Bays	-	Air Conditioning	Yes
Title	-	Generator	-
Zoning	Commercial	Fibre	-



CONTACT US

Call the Officeplace Broker
Khumo Molefe
Cell No. 0660190546
Email khumo@apiproperty.co.za



Call the Officeplace Branch
Johannesburg
Office No. (011) 2341144
Email contact@officeplace.co.za



 <https://www.facebook.com/officeplace/>