

21,540 pm

Bram Fischer Towers, Marshalltown, Johannesburg - CBD

 **359 m²**

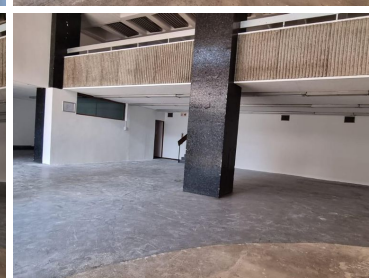
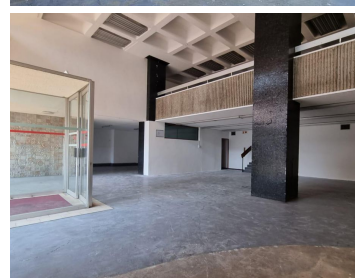
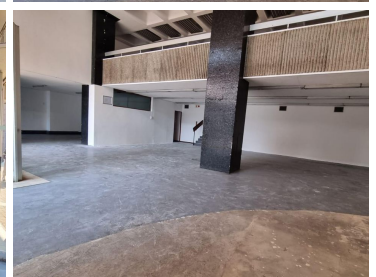
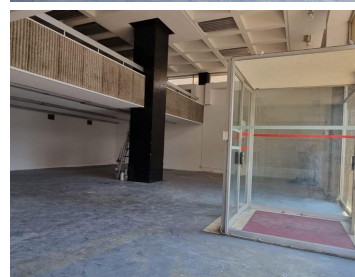
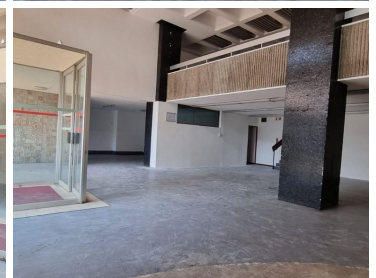
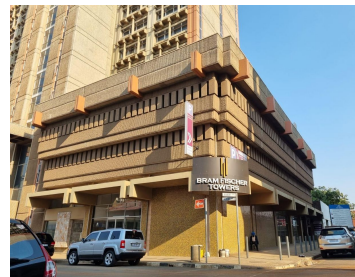
This Ground Floor retail unit is available to let immediately.

The unit enjoys its own bathrooms and kitchenette, which are located upstairs.

The unit is very versatile - can be a Client Walk in centre/clothing shop/church, for example.

A walking distance to Gandhi Square.

Public transport facilities nearby.



Gross Monthly Rental R21,540 Ex Vat
Lease Period Negotiable
Available From Immediately

Floor Size m²	359	Security	Yes
Parking Bays	-	Air Conditioning	Yes
Title	-	Generator	-
Zoning	Commercial	Fibre	-

CONTACT US

Call the Officeplace Broker
Khumo Molefe
Cell No. 0660190546
Email khumo@apiproperty.co.za

Call the Officeplace Branch
Johannesburg
Office No. (011) 2341144
Email contact@officeplace.co.za

 <https://www.facebook.com/officeplace/>