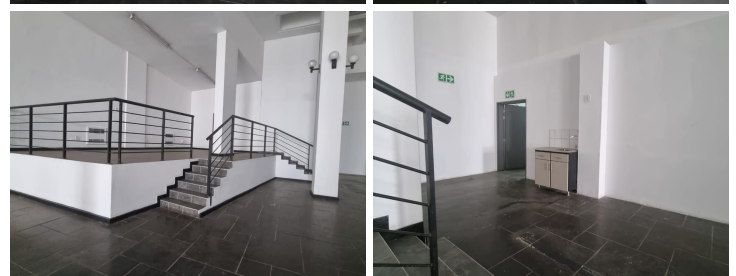
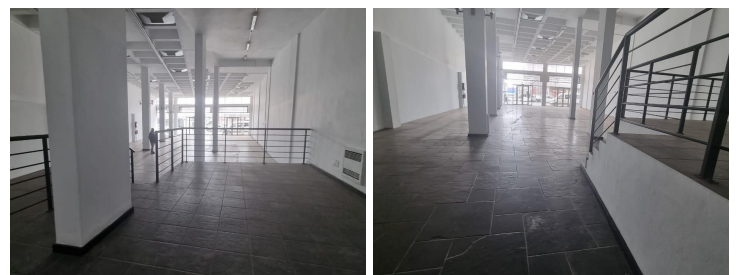
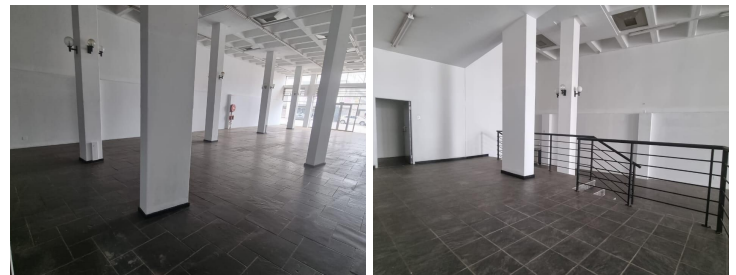
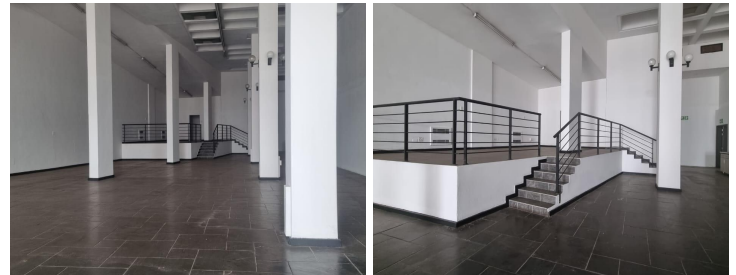


31,600 pm

Bram Fischer Towers | 20 Albert Street, Marshalltown

 **395 m²**

This ground floor retail unit is available immediately for occupation. The unit is tiled throughout and offers good natural lighting. The unit is very versatile - can be a Client walk in centre / clothing shop / church, for example. Located just in just walking distance to Gandhi Square. Public transport facilities nearby.



Gross Monthly Rental R31,600 Ex Vat
Lease Period Negotiable
Available From Immediately

Floor Size m²	395	Security	Yes
Parking Bays	-	Air Conditioning	-
Title	Sectional Title	Generator	-
Zoning	Commercial	Fibre	-

CONTACT US

Call the Officeplace Broker
Khumo Molefe
Cell No. 0660190546
Email khumo@apiproperty.co.za

Call the Officeplace Branch
Johannesburg
Office No. (011) 2341144
Email contact@officeplace.co.za

 <https://www.facebook.com/officeplace/>