

# 4,600 pm

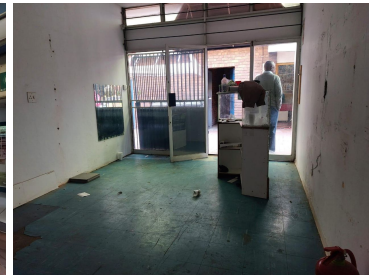
Retail space available for rental in Johannesburg CBD

 18 m<sup>2</sup>

Unit has an existing fit out with standard lighting and flooring, large shop front glass door with security gate.

It is conveniently situated in a passage, across the road from the Bree Taxi Rank.

There are prepaid water and electricity meters inside the shop.



**Gross Monthly Rental** R4,600 Ex Vat  
**Lease Period** Negotiable  
**Available From** Immediately

<b>Floor Size m<sup>2</sup></b>	18	<b>Security</b>	Yes
<b>Parking Bays</b>	-	<b>Air Conditioning</b>	-
<b>Title</b>	-	<b>Generator</b>	-
<b>Zoning</b>	Commercial	<b>Fibre</b>	-

## CONTACT US

Call the Officeplace Broker  
**Khumo Molefe**  
**Cell** No. 0660190546  
**Email** khumo@apiproperty.co.za

Call the Officeplace Branch  
**Johannesburg**  
**Office** No. (011) 2341144  
**Email** contact@officeplace.co.za

 <https://www.facebook.com/officeplace/>

