

# 19,600 pm

This retail space is available to let immediately.

 **196 m<sup>2</sup>**

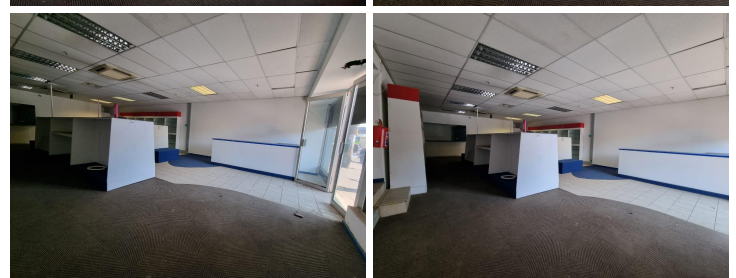
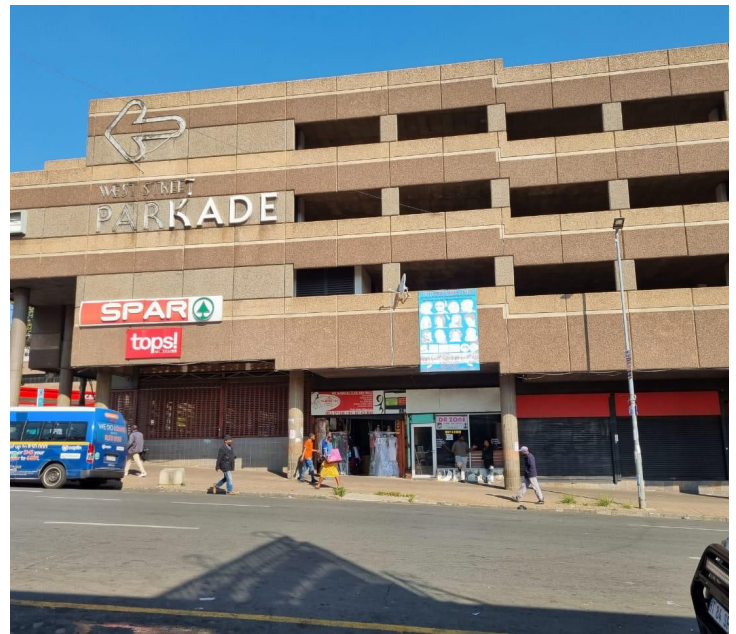
This retail space is situated along a taxi route; and is a stone's throw away from the Bree Taxi Rank.

The shop has an automated roller shutter door.

The space is made up of an open plan area and 2 spacious offices/ store room area.

The shop also has a kitchenette.

The Turbine Hall, Sci-Bono, FNB Bankcity, the Reserve Bank are all a walking distance away.



**Gross Monthly Rental** R19,600 Ex Vat  
**Lease Period** Negotiable  
**Available From** Immediately

|                                 |            |                         |     |
|---------------------------------|------------|-------------------------|-----|
| <b>Floor Size m<sup>2</sup></b> | 196        | <b>Security</b>         | Yes |
| <b>Parking Bays</b>             | -          | <b>Air Conditioning</b> | -   |
| <b>Title</b>                    | -          | <b>Generator</b>        | -   |
| <b>Zoning</b>                   | Commercial | <b>Fibre</b>            | -   |

## CONTACT US

Call the Officeplace Broker  
**Khumo Molefe**  
**Cell** No. 0660190546  
**Email** khumo@apiproperty.co.za

Call the Officeplace Branch  
**Johannesburg**  
**Office** No. (011) 2341144  
**Email** contact@officeplace.co.za

 <https://www.facebook.com/officeplace/>