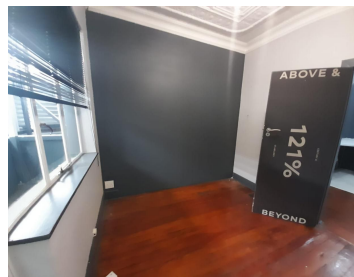


8,000 pm

80 Grant Avenue | Prime Retail Space to Let in Norwood

 80 m²

A retail space measuring 80sqm is available to let for immediate occupation. The unit is spacious with well-maintained flooring and excellent natural light flowing throughout. Situated on a busy main road with plenty of exposure and great signage opportunity. The property is located in Norwood and is ideally situated in close proximity to Ivy Road, which leads directly to the M1 highway allowing for quick and easy navigation to the space.



Gross Monthly Rental R8,000 Ex Vat
Lease Period 12 months
Available From Immediately

Floor Size m²	80	Security	Yes
Parking Bays	-	Air Conditioning	Yes
Title	-	Generator	-
Zoning	Commercial	Fibre	-

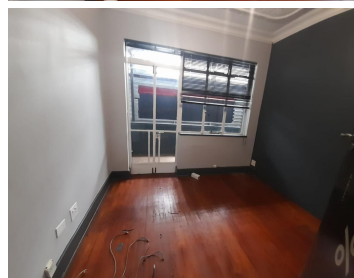
CONTACT US

Call the Officeplace Broker

Casey David

Cell No. +27664749057

Email casey@officeplace.co.za



Call the Officeplace Branch

Johannesburg

Office No. (011) 2341144

Email contact@officeplace.co.za

 <https://www.facebook.com/officeplace/>