

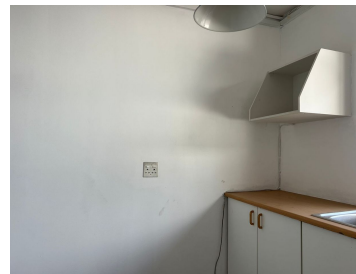
# 36,195 pm

Parktown Quarter | Prime Office Space to Let in Parktown North

 **285 m<sup>2</sup>**

This prime 2nd floor office space measuring 285sqm is available to Let for immediate occupation. The offices are spacious and have excellent natural lighting throughout. Offices have stunning views. The kitchen and bathrooms are shared. There is 24-hour security, an elevator in the building and a deck area for communal use. There is great shopping and restaurants in the centre.

Parktown Quarter is close to Rosebank, all main arterial routes and other amenities in the area.



**Gross Monthly Rental** R36,195 Ex Vat  
**Lease Period** 12 months  
**Available From** Immediately

<b>Floor Size m<sup>2</sup></b>	285	<b>Security</b>	Yes
<b>Parking Bays</b>	-	<b>Air Conditioning</b>	Yes
<b>Title</b>	-	<b>Generator</b>	-
<b>Zoning</b>	Commercial	<b>Fibre</b>	-

## CONTACT US

Call the Officeplace Broker  
**Ash Warwick**  
**Cell** No. 0769309520  
**Email** ash@officeplace.co.za

Call the Officeplace Branch  
**Johannesburg**  
**Office** No. (011) 2341144  
**Email** contact@officeplace.co.za

 <https://www.facebook.com/officeplace/>