

98,000 pm

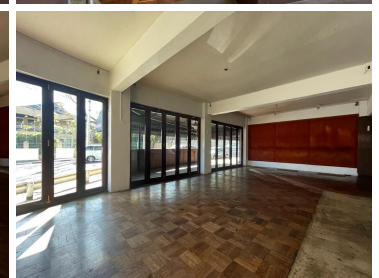
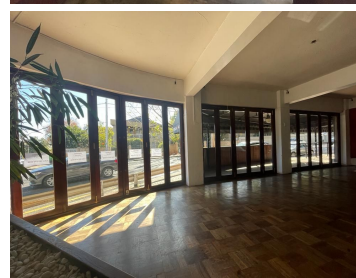
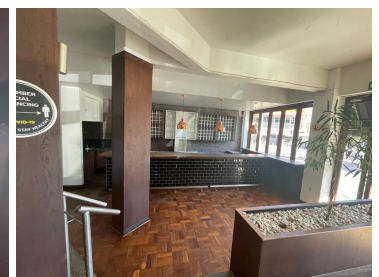
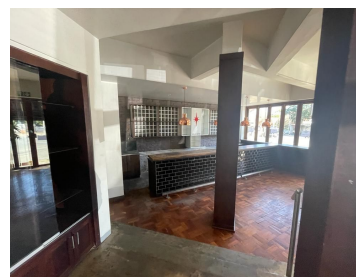
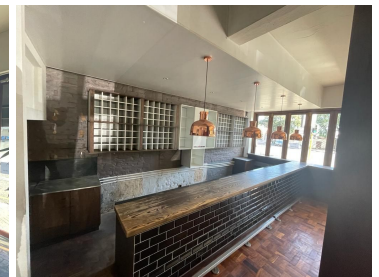
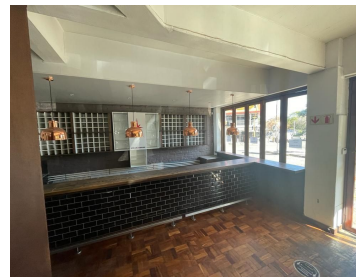
360sqm Restaurant space available for rental in Parktown North

 **360 m²**

Parktown Quarter is situated closely to the rapidly expanding node of Rosebank. A quaint centre perfect for a daily grocery run at Woolworths, complimented with a Motherland Coffee Company and Nandos.

Located on the ground floor of this corner stand is a very neat 360sqm restaurant space with a great existing fit out. Large open plan space with fully tiled flooring and excellent natural light.

It is situated on a main route with plenty of transport and shopping amenities for staff.



Gross Monthly Rental R98,000 Ex Vat
Lease Period Negotiable
Available From Immediately

Floor Size m²	360	Security	Yes
Parking Bays	-	Air Conditioning	Yes
Title	-	Generator	-
Zoning	Commercial	Fibre	-

CONTACT US

Call the Officeplace Broker
Ash Warwick
Cell No. 0769309520
Email ash@officeplace.co.za

Call the Officeplace Branch
Johannesburg
Office No. (011) 2341144
Email contact@officeplace.co.za

 <https://www.facebook.com/officeplace/>