


172,800 pm

Office space available for rental in AAA-Grade Parktown building

 **1280 m²**

This prime AAA rated building located within the commercial hub of Parktown and allows for easy access to main arterial roads.

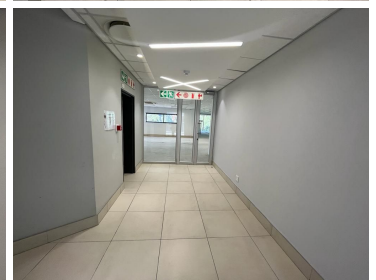
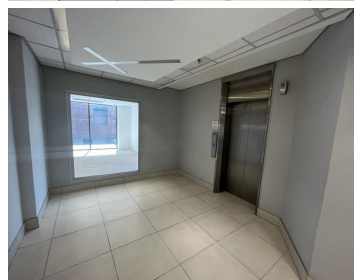
This 1,280smq unit can be fitted to tenant specifications. This prime property offers energy efficient air conditioning and lighting and is visible from the M1 Highway.

This well positioned building offers excellent security and is close to Empire Road with easy access to all main arterial roads in the area and various modes of public transport



Gross Monthly Rental R172,800 Ex Vat
Lease Period Negotiable
Available From Immediately

Floor Size m²	1280	Security	Yes
Parking Bays	-	Air Conditioning	Yes
Title	-	Generator	-
Zoning	Commercial	Fibre	-



CONTACT US

Call the Officeplace Broker
Velile Moroe
Cell No. 066 477 9947
Email velile@officeplace.co.za

Call the Officeplace Branch
Johannesburg
Office No. (011) 2341144
Email contact@officeplace.co.za

 <https://www.facebook.com/officeplace/>

