

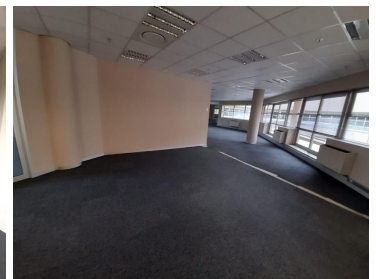
88,596 pm

Well-located office space to let in the Parktown area

 **963 m²**

This is a well-located office park available for lease in the Parktown business node. The building is situated just off the Empire main road, allowing for quick and easy navigation to the property. The M1 highway and various public transportation facilities are close by.

The interior of the space features neatly carpeted open plan and individually partitioned areas. There is standard air-conditioning and lighting in the space. Plenty windows allow great natural light to flow throughout. There is a kitchen in the office.



Gross Monthly Rental R88,596 Ex Vat
Lease Period Negotiable
Available From Immediately

Floor Size m²	963	Security	Yes
Parking Bays	-	Air Conditioning	Yes
Title	Sectional Title	Generator	-
Zoning	Commercial	Fibre	-

CONTACT US

Call the Officeplace Broker
Velile Moroe
Cell No. 066 477 9947
Email velile@officeplace.co.za

Call the Officeplace Branch
Johannesburg
Office No. (011) 2341144
Email contact@officeplace.co.za

 <https://www.facebook.com/officeplace/>

