

90,640 pm

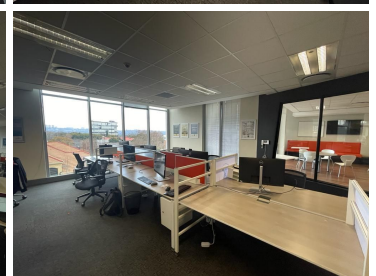
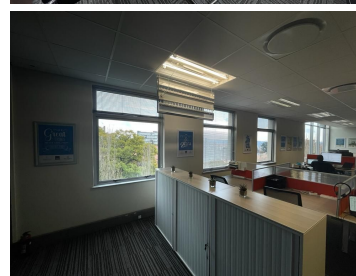
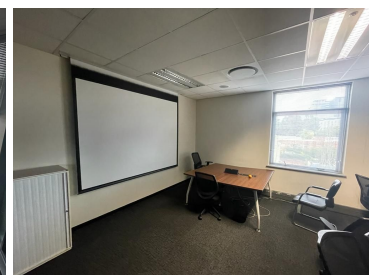
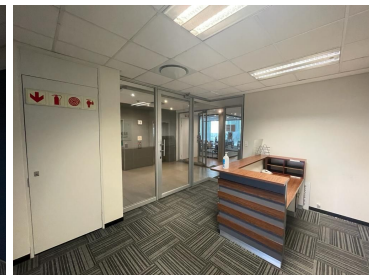
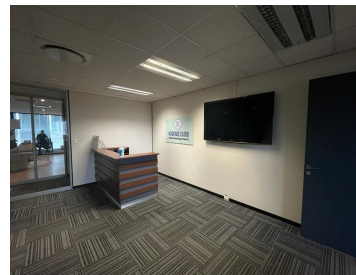
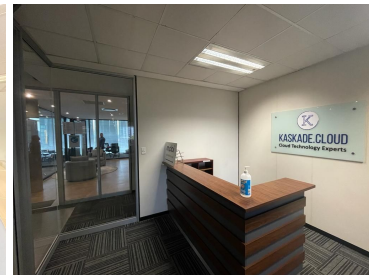
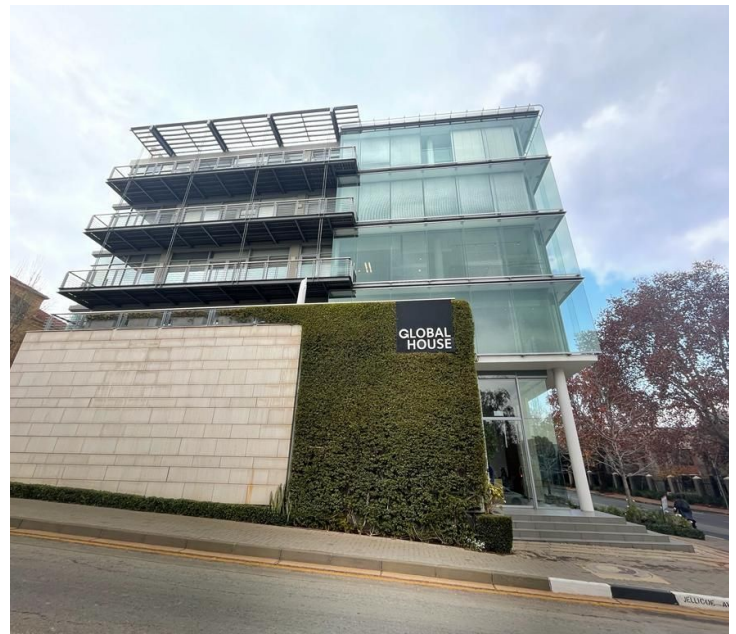
Office space available for rental in Rosebank

 **412 m²**

Global House is a upmarket building located in the prime hub within Rosebank. This elegant four-storey building offers ample parking, prime location and easy access to Oxford Road and Jan Smuts Avenue.

Located on the the 2nd floor of this beautiful building is a 412sqm modern fully fitted unit consisting of a walk in reception area, open plan as well as partitioned offices, very modern kitchen with laminate flooring. Unit also has a balcony and wonderful view of the surrounding sky line.

This property is situated on the corner of Sturdee Avenue and Jellicoe Avenue.



Gross Monthly Rental R90,640 Ex Vat
Lease Period Negotiable
Available From Immediately

Floor Size m²	412	Security	Yes
Parking Bays	-	Air Conditioning	Yes
Title	-	Generator	-
Zoning	Commercial	Fibre	-

CONTACT US

Call the Officeplace Broker
Ash Warwick
Cell No. 0769309520
Email ash@officeplace.co.za

Call the Officeplace Branch
Johannesburg
Office No. (011) 2341144
Email contact@officeplace.co.za

 <https://www.facebook.com/officeplace/>