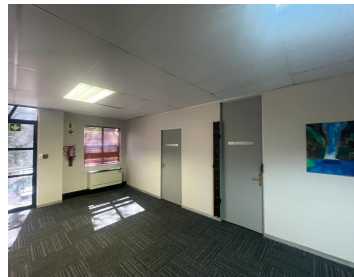
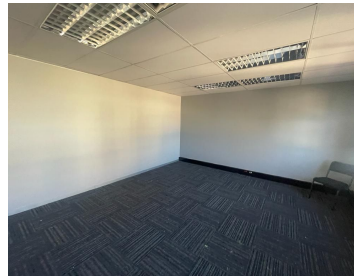
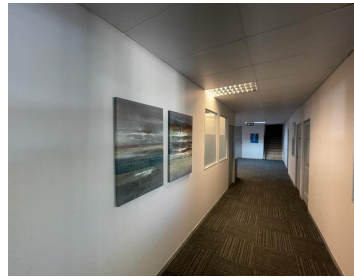
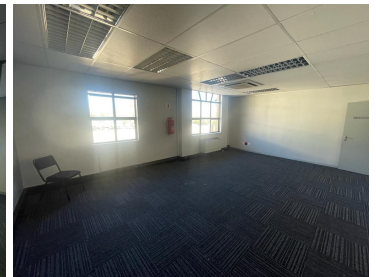
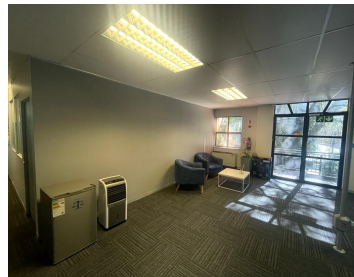


# 13,000 pm

Rosebank | Xspace Serviced Offices

 39 m<sup>2</sup>

A grade office component measuring 39sqm situated on the first floor. This pristine, micro commercial space is available immediately for occupation. Xspace Serviced Offices have a variety of different sizes and flexible lease terms to suit any budget and requirement. Their services include reception, 24 hour biometric access, cleaning, internet, secure parking, air-conditioned offices, generator and there's CCTV monitoring.



**Gross Monthly Rental** R13,000 Ex Vat  
**Lease Period** Negotiable  
**Available From** Immediately

<b>Floor Size m<sup>2</sup></b>	39	<b>Security</b>	Yes
<b>Parking Bays</b>	-	<b>Air Conditioning</b>	Yes
<b>Title</b>	-	<b>Generator</b>	-
<b>Zoning</b>	Commercial	<b>Fibre</b>	-

## CONTACT US

Call the Officeplace Broker  
**Ash Warwick**  
**Cell** No. 0769309520  
**Email** ash@officeplace.co.za

Call the Officeplace Branch  
**Johannesburg**  
**Office** No. (011) 2341144  
**Email** contact@officeplace.co.za

 <https://www.facebook.com/officeplace/>