

18,000 pm

OFFICE TO LET IN KEMPTON PARK | HIGH STREET | BREDELL

 **400 m²**

A neat building is immediately available to let in the Kempton Park business node. The property is ideally situated on a main road, allowing for great exposure and high visibility.

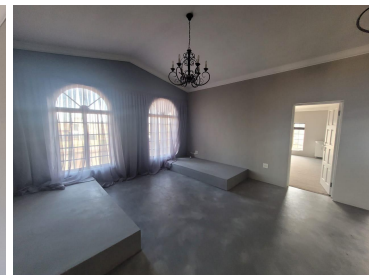
The property is neat and well-maintained. Features include a welcoming reception area, offices, bathrooms and air conditioning. Fantastic natural light flows throughout the space.

The building is also easily accessible from the R21 highway and is close to the O.R Tambo International Airport.



Gross Monthly Rental R18,000 Ex Vat
Lease Period Negotiable
Available From Immediately

Floor Size m²	400	Security	Yes
Parking Bays	-	Air Conditioning	Yes
Title	-	Generator	-
Zoning	Commercial	Fibre	-

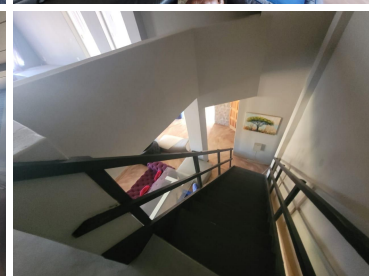


CONTACT US

Call the Officeplace Broker
Jarryd Baard
Cell No. 0664356181
Email jarryd@officeplace.co.za



Call the Officeplace Branch
Johannesburg
Office No. (011) 2341144
Email contact@officeplace.co.za



 <https://www.facebook.com/officeplace/>