


47,000 pm

Isando Business Park | A grade unit to let in Kempton Park

 **720 m²**

Exceptionally neat and spacious commercial unit measuring 720sqm available immediately for occupation. The office component boasts brilliant natural lighting throughout the space with air conditioning and features upmarket finishes. Situated in a highly secure, well maintained business park complied with ample shade net and open parking bays present for tenants and visitors.



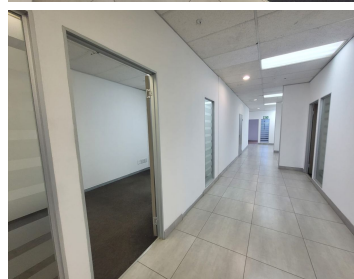
Gross Monthly Rental R47,000 Ex Vat
Lease Period Negotiable
Available From Negotiable



Floor Size m²	720	Security	Yes
Parking Bays	-	Air Conditioning	Yes
Title	-	Generator	-
Zoning	Commercial	Fibre	-

CONTACT US

Call the Officeplace Broker
Jarryd Baard
Cell No. 0664356181
Email jarryd@officeplace.co.za



Call the Officeplace Branch
Johannesburg
Office No. (011) 2341144
Email contact@officeplace.co.za



 <https://www.facebook.com/officeplace/>