

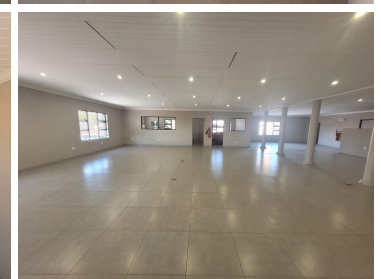
30,000 pm

Pomona | Office space to let in Kempton Park

 **450 m²**

Pristine and upmarket commercial unit measuring 450sqm available immediately for occupation at R30 000 per month plus VAT and utilities. The office component is an upstairs unit providing excellent natural lighting throughout and air-conditioning.

Very modern finishes. The space is safe and secure offering very easy access to all main roads, highways, amenities as well as there's various public transportation systems nearby and easily accessible.



Gross Monthly Rental R30,000 Ex Vat
Lease Period Negotiable
Available From Immediately

Floor Size m²	450	Security	Yes
Parking Bays	-	Air Conditioning	-
Title	-	Generator	-
Zoning	Commercial	Fibre	-

CONTACT US

Call the Officeplace Broker
Jarryd Baard
Cell No. 0664356181
Email jarryd@officeplace.co.za

Call the Officeplace Branch
Johannesburg
Office No. (011) 2341144
Email contact@officeplace.co.za

 <https://www.facebook.com/officeplace/>