

# 7,500 pm

Tranquil First-Floor Office with Garden Views in a Charming Complex

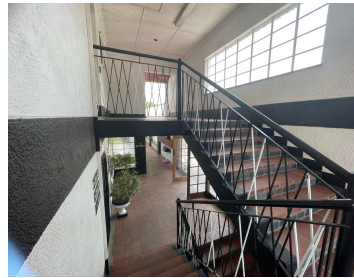
 **80 m<sup>2</sup>**

An office located in a quaint office complex overlooking a wonderful garden. This office complex has a home vibe to it making it have a zen sense. Located on the first floor.

This is a 1st floor office, consisting of a reception area; 1 office, an open plan work area, with ablution facilities and kitchen.

The unit has 3 parking bays @ R350 ex Vat, there is visitors parking. Metered electricity & water.

Located off Jan Smuts Avenue and Conrad Drive.



**Gross Monthly Rental** R7,500 Ex Vat  
**Lease Period** 12 months  
**Available From** Immediately

<b>Floor Size m<sup>2</sup></b>	80	<b>Security</b>	Yes
<b>Parking Bays</b>	-	<b>Air Conditioning</b>	Yes
<b>Title</b>	-	<b>Generator</b>	-
<b>Zoning</b>	Commercial	<b>Fibre</b>	-

## CONTACT US

Call the Officeplace Broker  
**Sihle Dambuza**  
 Cell No. 0826145727  
 Email [sihle@officeplace.co.za](mailto:sihle@officeplace.co.za)

Call the Officeplace Branch  
**Johannesburg**  
 Office No. (011) 2341144  
 Email [contact@officeplace.co.za](mailto:contact@officeplace.co.za)

 <https://www.facebook.com/officeplace/>

