

35,000 pm

Lifestyle Riverfront Office Park | Premium Office Space to Let in Boskruijn

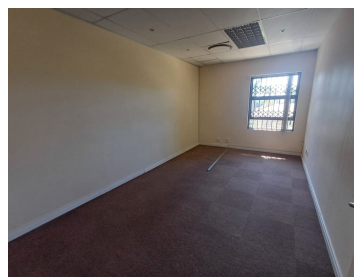
 **350 m²**

Premium office space available to let in the Lifestyle Riverfront Office Park. The space features various partitioned offices, an open plan section, kitchen and bathrooms. Carpeted flooring throughout and Venetian blinds. Rental @ R35 000.00 per month includes allocated parking bays, excludes VAT and utilities. Lifestyle Riverfront Office Park is a 24-hour access-controlled complex situated in close proximity to the N1 highway and Beyers Naude Drive, allowing for easy navigation to the office park. There are various retail amenities close by.



Gross Monthly Rental R35,000 Ex Vat
Lease Period 12 months
Available From Immediately

Floor Size m²	350	Security	Yes
Parking Bays	-	Air Conditioning	Yes
Title	-	Generator	-
Zoning	Commercial	Fibre	-



CONTACT US

Call the Officeplace Broker
Jonathan Da Silva
Cell No. 0664749055
Email jonathan@officeplace.co.za

Call the Officeplace Branch
Johannesburg
Office No. (011) 2341144
Email contact@officeplace.co.za

 <https://www.facebook.com/officeplace/>