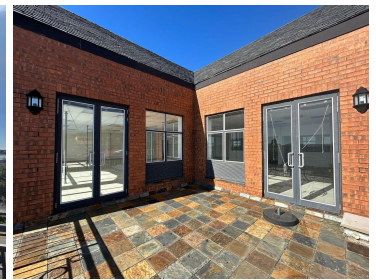


# 32,620 pm

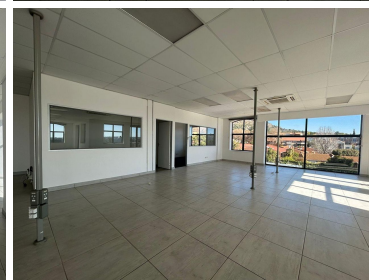
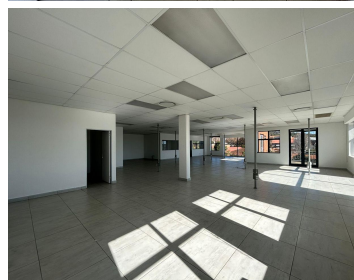
Stonemil Office Park Cornerstone House | Prime office space to let

 **233 m<sup>2</sup>**

This stunning 233sqm office space situated at Stonemil Office Park Cornerstone house is to let. This beautiful upstairs unit is tiled and has excellent natural lighting. There are two separate offices with windows and a balcony. The kitchen and bathroom areas are very neat and clean. There are four basement parking bays for R550 and four open parking bays for R450. A three month deposit is required.



**Gross Monthly Rental** R32,620 Ex Vat  
**Lease Period** Negotiable  
**Available From** Negotiable



<b>Floor Size m<sup>2</sup></b>	233	<b>Security</b>	Yes
<b>Parking Bays</b>	-	<b>Air Conditioning</b>	Yes
<b>Title</b>	Sectional Title	<b>Generator</b>	-
<b>Zoning</b>	Commercial	<b>Fibre</b>	-

## CONTACT US

Call the Officeplace Broker  
**Jonathan Da Silva**  
 Cell No. 0664749055  
 Email [jonathan@officeplace.co.za](mailto:jonathan@officeplace.co.za)

Call the Officeplace Branch  
**Johannesburg**  
 Office No. (011) 2341144  
 Email [contact@officeplace.co.za](mailto:contact@officeplace.co.za)

 <https://www.facebook.com/officeplace/>

