

# 67,680 pm

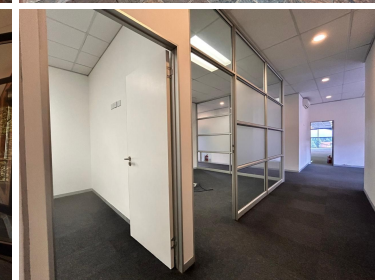
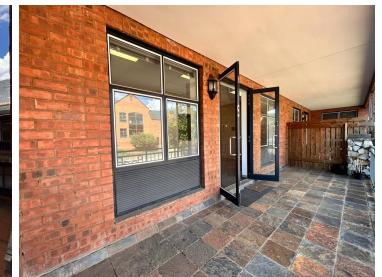
Stonemill Office Park | Stunning Office Space to Let in Randburg

 **564 m<sup>2</sup>**

Stunning office space located at Stonemill Office Park is available to let for immediate occupation. The unit measures 564sqm and consists of an open plan area, partitioned offices, kitchen and ablutions. The unit is spacious with well-maintained carpeted flooring, excellent natural light and air-conditioning.

There are 16 basement parking bays at R550 per bay per month and 15 open parking bays at R350 per bay per month. Rental is R120 per sqm excluding VAT and utilities.

Stonemill Office Park is close to Cresta Shopping Centre, all main arterial routes and other amenities in the area.



**Gross Monthly Rental** R67,680 Ex Vat  
**Lease Period** 12 months  
**Available From** Immediately

<b>Floor Size m<sup>2</sup></b>	564	<b>Security</b>	Yes
<b>Parking Bays</b>	-	<b>Air Conditioning</b>	Yes
<b>Title</b>	-	<b>Generator</b>	-
<b>Zoning</b>	Commercial	<b>Fibre</b>	-

## CONTACT US

Call the Officeplace Broker  
**Jonathan Da Silva**  
 Cell No. 0664749055  
 Email [jonathan@officeplace.co.za](mailto:jonathan@officeplace.co.za)

Call the Officeplace Branch  
**Johannesburg**  
 Office No. (011) 2341144  
 Email [contact@officeplace.co.za](mailto:contact@officeplace.co.za)

 <https://www.facebook.com/officeplace/>

