

41,250 pm

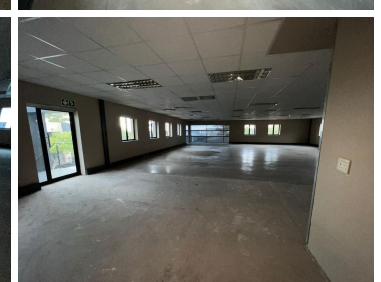
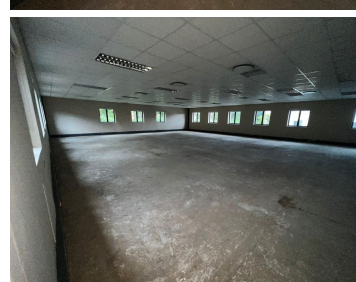
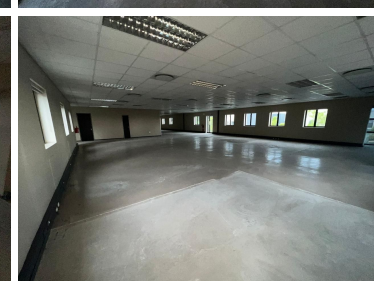
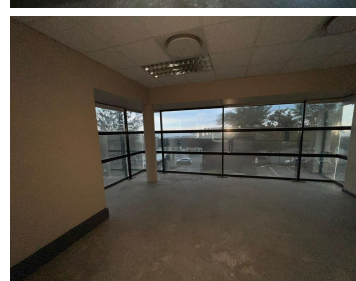
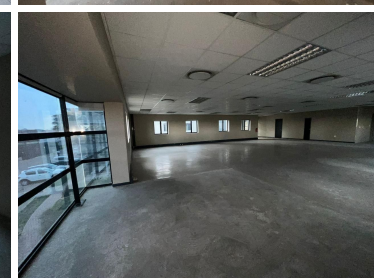
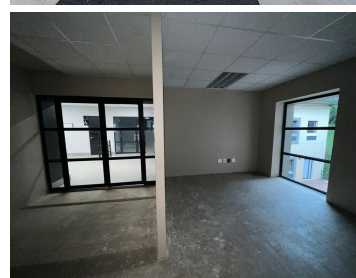
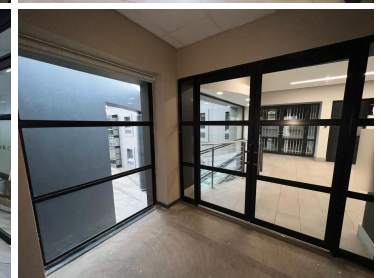
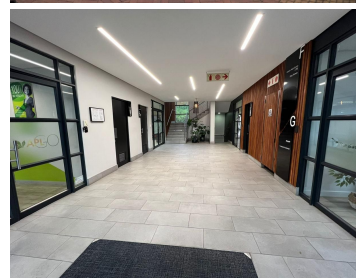
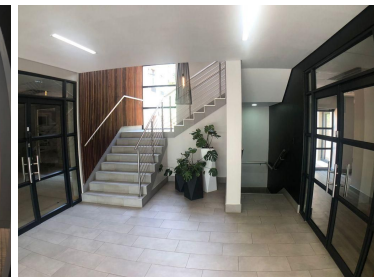
CLEARWATER OFFICE PARK OFFICE | STRUBENSVALLEI
| PRISTINE OFFICE TO LET

 **330 m²**

The office component is available immediately for occupation. Clearwater Office Park offers stunning, manicured gardens, plenty parking bays as well as 24 hour, access control security.

Exquisite office space measuring 330sqm situated on the first floor of Building 5 in Clearwater Office Park. The unit is immaculate boasting fantastic natural lighting and modern finishes.

Strategically and conveniently located next to Clear Water Mall and is accessible from all the main arterial routes, with easy access to public modes of transport.



Gross Monthly Rental R41,250 Ex Vat
Lease Period Negotiable
Available From Immediately

Floor Size m²	330	Security	Yes
Parking Bays	-	Air Conditioning	Yes
Title	-	Generator	-
Zoning	Commercial	Fibre	-

CONTACT US

Call the Officeplace Broker
Julia Sanderson
Cell No. 0794950315
Email julia@officeplace.co.za

Call the Officeplace Branch
Johannesburg
Office No. (011) 2341144
Email contact@officeplace.co.za

 <https://www.facebook.com/officeplace/>