

69,496 pm

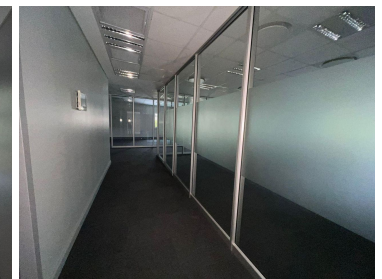
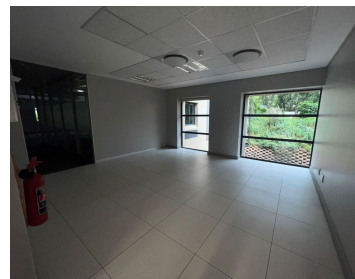
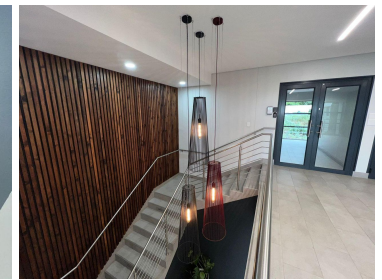
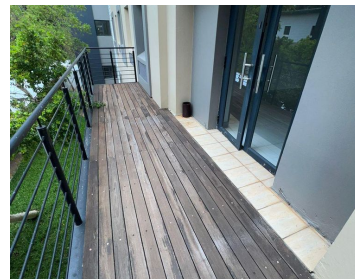
CLEARWATER OFFICE PARK OFFICE | STRUBENSVALLEI
| STRUBENS VALLEY | ROODEPOORT

 **584 m²**

Clearwater Office Park is an A-grade Office Park which offers 6 buildings, stunning, manicured gardens, plenty parking bays as well as 24 hour, access control security.

Exquisite office space measuring 584sqm situated on the first floor of Building 4 in Clearwater Office Park. The unit is immaculate boasting fantastic natural lighting and modern finishes. Unit has an open plan layout along with several glass partitioned spaces.

Strategically and conveniently located next to Clear Water Mall and is accessible from all the main arterial routes, with easy access to public modes of transport



Gross Monthly Rental R69,496 Ex Vat
Lease Period Negotiable
Available From Immediately

Floor Size m²	584	Security	Yes
Parking Bays	-	Air Conditioning	Yes
Title	-	Generator	-
Zoning	Commercial	Fibre	-

CONTACT US

Call the Officeplace Broker
Julia Sanderson
Cell No. 0794950315
Email julia@officeplace.co.za

Call the Officeplace Branch
Johannesburg
Office No. (011) 2341144
Email contact@officeplace.co.za

 <https://www.facebook.com/officeplace/>

