

39,490 pm

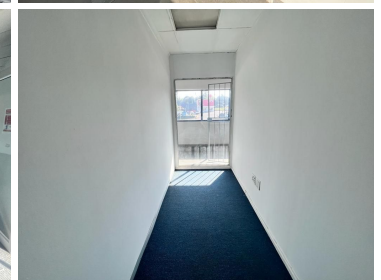
Palm Court Shopping Centre | Retail to let in Roodepoort

 **359 m²**

Palm Court Shopping Centre is an ideally situated complex in the Weltevreden Park area.

This is a 359sqm office with an open plan layout that can be fitted to tenant specification, standard office lighting and air conditioning as well as excellent natural light filling the space.

The centers location offers great visibility and allows for quick and easy accessibility. The N1 highway is just a short distance away



Gross Monthly Rental R39,490 Ex Vat
Lease Period Negotiable
Available From Immediately

Floor Size m²	359	Security	Yes
Parking Bays	-	Air Conditioning	Yes
Title	-	Generator	-
Zoning	Commercial	Fibre	-

CONTACT US

Call the Officeplace Broker
Jonathan Da Silva
 Cell No. 0664749055
 Email jonathan@officeplace.co.za

Call the Officeplace Branch
Johannesburg
 Office No. (011) 2341144
 Email contact@officeplace.co.za

 <https://www.facebook.com/officeplace/>

