

11,464 pm

Prime Office Space in Constantia Office Park

 **104 m²**

Gateview House office, located on the lower ground floor of the Constantia Office Park.

Incentives are in place for 3 & 5 year leases. *T&Cs apply. Incentives apply to asking rentals only.

This green and vibrant retail centre is set in beautifully landscaped gardens with flowing ponds and water elements. It is home to an abundance of birds. Established amenities include a Virgin Active gym, restaurants and Shell garage. This office offers excellent exposure, access onto the N1 (North and South) and is close to public transport.

The office unit has water and generator back-up. There is fibre internet connection in the building. This building offers 24 hour security.

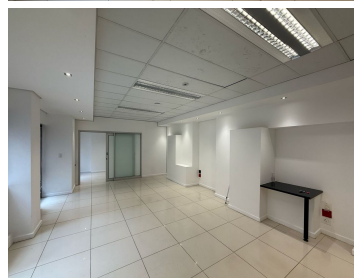
Generator backup: Yes, R6.00/m2 fee
 Water backup: Yes, R0.47/m2 fee
 Air conditioning maintenance recovery fee: R64,49 per unit.
 Balcony/m2: R50.00/m2

Gross rental Rate: R110/m2 ex VAT
Gross Monthly Rental R11,464 Ex Vat
 Gross Lettable Area: 104.22m2
Lease Period 12 months

Available From Immediately

Parking Ratio/100m2- 3 bays
 - Open parking = R450 per bay pm

Floor Size m²	104	Security	Yes
Parking Bays	-	Air Conditioning	Yes
Title	-	Generator	-
Zoning	Commercial	Fibre	-



CONTACT US

Call the Officeplace Broker
Julia Sanderson
 Cell No. 0794950315
 Email julia@officeplace.co.za

Call the Officeplace Branch
Johannesburg
 Office No. (011) 2341144
 Email contact@officeplace.co.za

 <https://www.facebook.com/officeplace/>