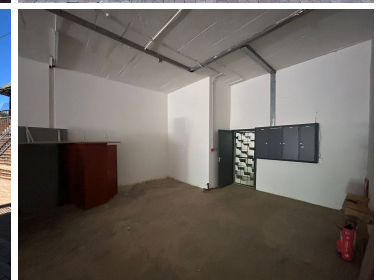
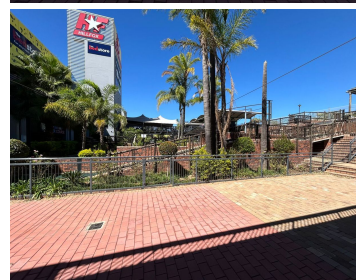


25,000 pm

Hillfoxx Value Centre | Market Space to Let in Weltevreden Park

 **204 m²**

Hillfoxx Value Centre located in Weltevreden Park, Roodepoort on the West Rand offers close proximity to the N1 highway and 14th Avenue off ramp. The centre accommodates anchor tenants such as Food Lovers Market and Viva Gym. There are also distribution shops available at the back of the centre. Adventure Golf and Action Sports bring high foot traffic through the centre. Tenants benefit from 24-Hour on site security. As a tenant basement parking is available at no additional cost. Rental is R122.49/m2 excluding VAT and utilities. Ops costs are R12.50/m2.



Gross Monthly Rental R25,000 Ex Vat
Lease Period 12 months
Available From Immediately

Floor Size m²	204	Security	Yes
Parking Bays	-	Air Conditioning	Yes
Title	-	Generator	-
Zoning	Commercial	Fibre	-

CONTACT US

Call the Officeplace Broker
Julia Sanderson
Cell No. 0794950315
Email julia@officeplace.co.za

Call the Officeplace Branch
Johannesburg
Office No. (011) 2341144
Email contact@officeplace.co.za

 <https://www.facebook.com/officeplace/>

