


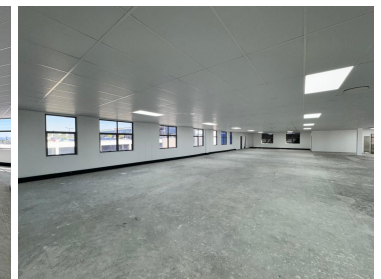
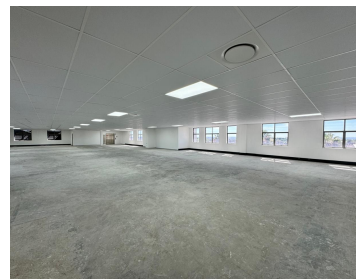
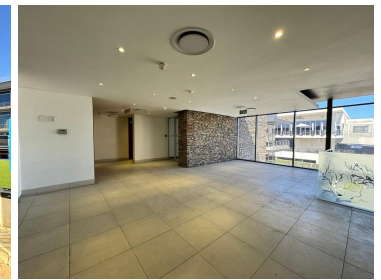
213,500 pm

Nicolway Bryanston | Premium Commercial Space to Lease in Bryanston

 **1220 m²**

Located just off Winnie Mandela Drive, this semi retail park is conveniently located next door to Nicolway Shopping Centre. Close to all retail amenities, and public transport routes.

This is a white box unit on the second-floor available for lease. The unit can be leased for either offices or semi retail offerings. The bathrooms are shared on the same floor. There is 24/7 security on the property. The office park has fibre connection in the building. There is generator and water back-up. Gross rental rate: R175 p/ m2 excluding VAT, parking and utilities. Open parking at R450 per bay per month and basement parking at R735 per bay per month.



Gross Monthly Rental R213,500 Ex Vat
Lease Period 36 months
Available From Immediately

Floor Size m²	1220	Security	Yes
Parking Bays	-	Air Conditioning	Yes
Title	-	Generator	-
Zoning	Commercial	Fibre	-

CONTACT US

Call the Officeplace Broker
Marques Rutter
Cell No. 060 672 6942
Email marques@officeplace.co.za

Call the Officeplace Branch
Johannesburg
Office No. (011) 2341144
Email contact@officeplace.co.za

 <https://www.facebook.com/officeplace/>

