


233,320 pm

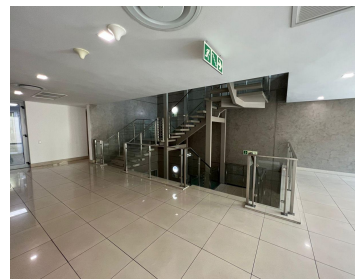
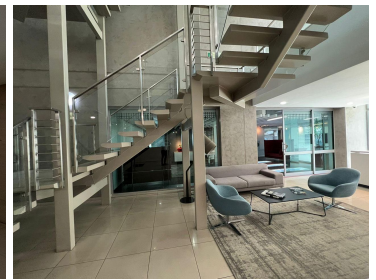
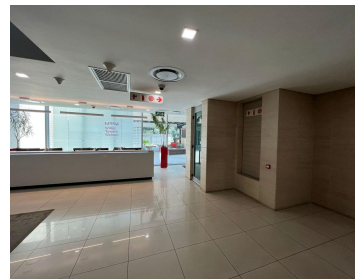
Full commercial office floor available for rental in Illovo

 **1228 m²**

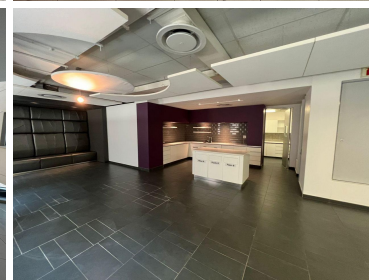
This is a 1,228sqm full floor which is immediately available for occupation in the Illovo Edge development.

Space enjoys an full neat existing fit out comprising of open plan layout as well a glass partitioned multi functional spaces, office lighting and air conditioning. Well maintained carpeted flooring can be found throughout.

This building is very ideally located just off the Oxford main road, creating quick and easy accessibility to the building. Fibre and a generator are available on site. Various amenities such as Thrupps Centre are close by with public transportation ready available



Gross Monthly Rental R233,320 Ex Vat
Lease Period Negotiable
Available From Immediately



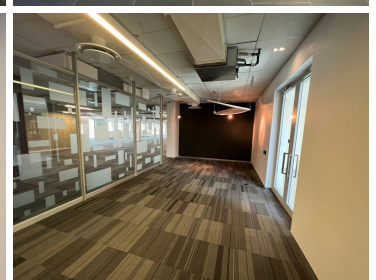
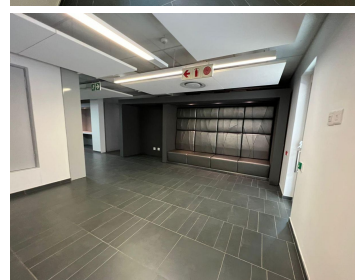
Floor Size m²	1228	Security	Yes
Parking Bays	-	Air Conditioning	Yes
Title	-	Generator	-
Zoning	Commercial	Fibre	-

CONTACT US

Call the Officeplace Broker
Ash Warwick
Cell No. 0769309520
Email ash@officeplace.co.za



Call the Officeplace Branch
Johannesburg
Office No. (011) 2341144
Email contact@officeplace.co.za



 <https://www.facebook.com/officeplace/>