

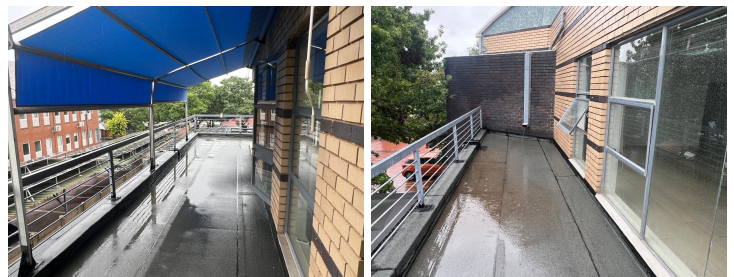
# 24,675 pm

Spacious First-Floor Office Suite To Let in Rivonia

 **329 m<sup>2</sup>**

A 329m<sup>2</sup> office space is available on the first floor at 29 Wessels Road, Rivonia. This well-located office offers a functional layout with ample space for various business needs. The rental rate is R75/m<sup>2</sup>, excluding VAT and utilities. An additional aircon levy of R8/m<sup>2</sup> applies. Parking is available at R450 per bay.

Don't miss this excellent opportunity—contact us today to arrange a viewing!



**Gross Monthly Rental** R24,675 Ex Vat  
**Lease Period** Negotiable  
**Available From** Immediately

<b>Floor Size m<sup>2</sup></b>	329	<b>Security</b>	Yes
<b>Parking Bays</b>	-	<b>Air Conditioning</b>	Yes
<b>Title</b>	-	<b>Generator</b>	-
<b>Zoning</b>	Commercial	<b>Fibre</b>	-

## CONTACT US

Call the Officeplace Broker  
**Mitch Dunn**  
**Cell** No. 066 474 9056  
**Email** [mitch@officeplace.co.za](mailto:mitch@officeplace.co.za)

Call the Officeplace Branch  
**Johannesburg**  
**Office** No. (011) 2341144  
**Email** [contact@officeplace.co.za](mailto:contact@officeplace.co.za)

 <https://www.facebook.com/officeplace/>

