

36,531 pm

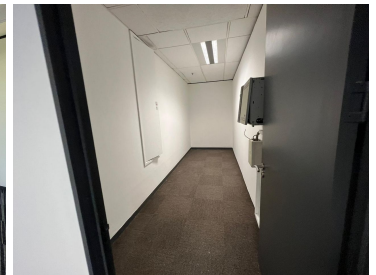
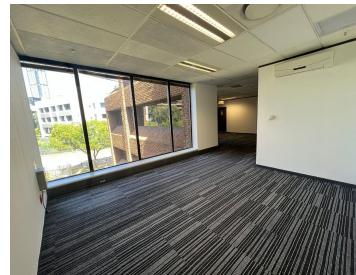
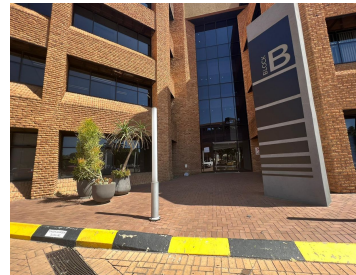
Sandton Close | Sandton CBD | Pristine office rental

 **332 m²**

Office space is available immediately for occupation. Situated in a popular, upmarket A-grade office block in Sandton City.

This is a 332sm office situated on the 2nd floor of building B, consisting of an open plan layout, standard office lighting and air conditioning as well as excellent natural light let in through the many windows around the office. Several multi functional spaces with well maintained carpeted flooring. Unit also has its own kitchenette area.

Secure parking is available at the building, with various amenities such as the Gautrain station situated close by.



Gross Monthly Rental R36,531 Ex Vat
Lease Period Negotiable
Available From Immediately

Floor Size m²	332	Security	Yes
Parking Bays	-	Air Conditioning	Yes
Title	-	Generator	-
Zoning	Commercial	Fibre	-

CONTACT US

Call the Officeplace Broker
Ben Hatchwell
Cell No. 0823052626
Email ben@officeplace.co.za

Call the Officeplace Branch
Johannesburg
Office No. (011) 2341144
Email contact@officeplace.co.za

 <https://www.facebook.com/officeplace/>

