

194,432 pm

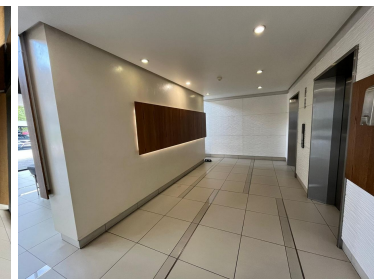
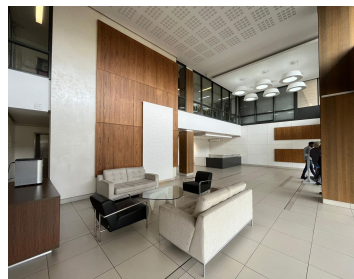
148 Katherine Street | Barlow Park | Sandton CBD

 **1389 m²**

Situated on the 2nd floor at 148 on Katherine Street is this 1,388.80sqm fully fitted office space available to let in a well located area in the Sandton business node.

Open plan work area with windows right around allowing for natural light to flow through. Well maintained carpets and air conditioning. Office has use of a balcony with an amazing view overlooking Sandton.

The building is easily accessible with a modern design inside and out. Situated close the the N1 highway with easy access to all main roads and public transport



Gross Monthly Rental R194,432 Ex Vat
Lease Period Negotiable
Available From Immediately

Floor Size m²	1389	Security	Yes
Parking Bays	-	Air Conditioning	Yes
Title	Sectional Title	Generator	-
Zoning	Commercial	Fibre	-

CONTACT US

Call the Officeplace Broker
Ben Hatchwell
Cell No. 0823052626
Email ben@officeplace.co.za

Call the Officeplace Branch
Johannesburg
Office No. (011) 2341144
Email contact@officeplace.co.za

 <https://www.facebook.com/officeplace/>

