



Jean Coetzer
064 755 7331
jean@officeplace.co.za

Contact Pretoria

012 6440522

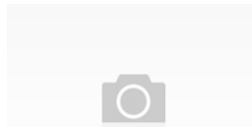
Southdowns Office Park, Block D
Ground Floor, Suite 6 & 7
22 Karree Street
Irene
Centurion



Web Ref ND301



Brooklyn Bridge Office Park



Offices (5)
From R230 per m²
Size from 200m² to 1,500m²

OFFICE TO RENT IN BROOKLYN, PRETORIA

AAA-GRADE COMMERCIAL OFFICE SUITES TO LEASE WITHIN WALKING DISTANCE TO A VARIETY OF AMENITIES AND OFFERING A BACK UP-GENERATOR

Brooklyn offers you an AAA-Grade Office Suites to let. The office is in walking distance from Brooklyn Mall and Cherry Lane hosting grocery stores such as Pick n pay and Woolworths, Checkers, retail stores such as Makro and fast-food outlets. The building has a variety of restaurants on the ground floor such as the famous Grill Room making it convenient for employees during lunch hour. The office is also in close quarters to the Day Clinic, Guesthouses, Embassies and school districts making it convenient...

Features

- ✓ Restaurant on the ground floor
- ✓ Walking distance from retail centres.
- ✓ Walking distance from medical professional centre.
- ✓ Great access from the CBD, R21, Groenkloof and Waterkloof.

